



artilay



PREMIUM PLANTERS



ABOUT US

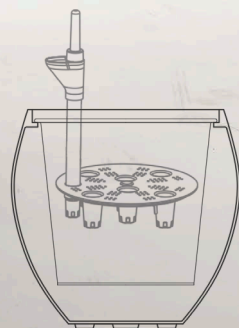
artilay, a visionary global brand born from the collaboration of landscape experts and seasoned business minds, presents an extraordinary fusion of artistry and functionality in the realm of planters and vases.

With a combined experience exceeding two decades, our founders have cultivated a deep understanding of the symbiotic relationship between greenery and interior design. Artilay emerges as the embodiment of this synergy, catering to the desires of plant enthusiasts and connoisseurs of luxury living alike.

Elevate your indoor spaces with a touch of nature's beauty, meticulously crafted for both practicality and opulent aesthetics. Whether adorning your spaces with living greenery or exquisite artificial plants, Artilay's creations stand as masterpieces of form and function. Our designs transcend conventional limitations, embodying narratives of ingenuity, proficiency, and devotion to crafting living art that resonates with emotion and aesthetics alike.

Our range encompasses diverse styles, materials, and techniques, proudly featuring the intricate lacquer Asian techniques and finishes like eggshell and silver leaf, each imparting an aura of uniqueness and extravagance.

Discover a world where form meets function, where planters and vases are not just vessels, but expressions of art and refinement. Welcome to artilay, where practicality meets luxury, and nature finds its place in the heart of your spaces.



Our self-watering system mimics a natural environment, providing consistent hydration to support plant growth. It effectively regulates the water supply to the roots, ensuring that the plant receives the optimal amount of moisture.



The inward rim detail introduces a visual element that enhances both the planter's overall design and the beauty of the surrounding space.



Raised planters serve a dual purpose: it safeguard the base of the planter while enhancing its aesthetics, elevating its overall beauty.



A plastic insert not only ensures leak-proof pots but also serves as a more attractive alternative to conventional bottom trays. It also ease the maintenance process of the plant by keeping the planter intact and clean, and better plant handling.



EGGSHELL

The Eggshell lacquer technique is a meticulous and intricate craft, where delicate eggshell fragments are meticulously applied onto a prepared surface, resulting in stunning and detailed designs.

Hailing from Asian cultures, this art form involves the careful arrangement of cleaned and prepared eggshell pieces onto a prepared base, adhering them with adhesive.

Subsequent layers of lacquer are applied to seal and protect the design, creating a mesmerizing interplay between the iridescent eggshell and the lacquer.

The technique exemplifies skilled artisanship and cultural heritage, producing captivating works of art on items such as boxes, trays, and decorative objects that embody both visual elegance and historical tradition.





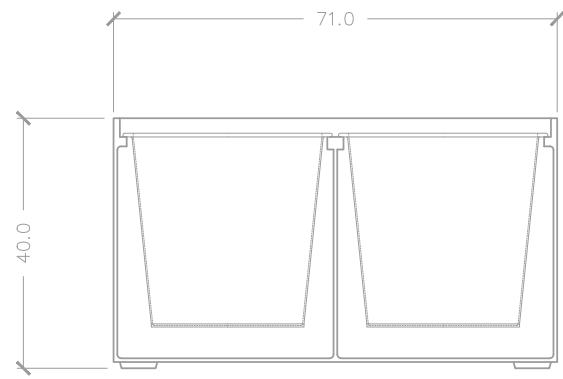
SILVERLEAF

Silver leaf gilding lacquer is a traditional decorative technique that involves the application of thin silver leaves onto a surface, usually fiber or wood, and sealing them with a protective lacquer. This method dates back to ancient times and is still practiced in some of the Far East countries. The process typically involves many steps to reach to the desired color and appearance. Including Surface Preparation, Applying Adhesive, Applying Silver Leaf, Burnishing and Patination, Applying Lacquer, Finishing Touches.

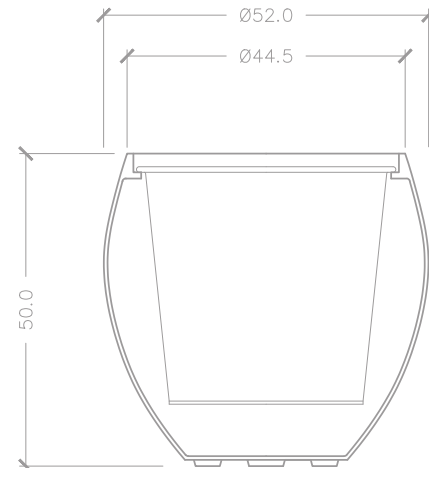
The technique requires a high level of skill and craftsmanship, as the delicate nature of silver leaf demands precision and attention to detail. Silver leaf gilding lacquer is often used to create intricate designs, patterns, and motifs on furniture, decorative objects, sculptures, and architectural elements.

We use this traditional technique in our pots and planters to experience the beauty of the plants and appreciate the this traditional craft. This traditional craft has been passed down through generations and is still valued for its artistic and cultural significance. It continues to be a testament to the enduring beauty and craftsmanship of ancient decorative arts.

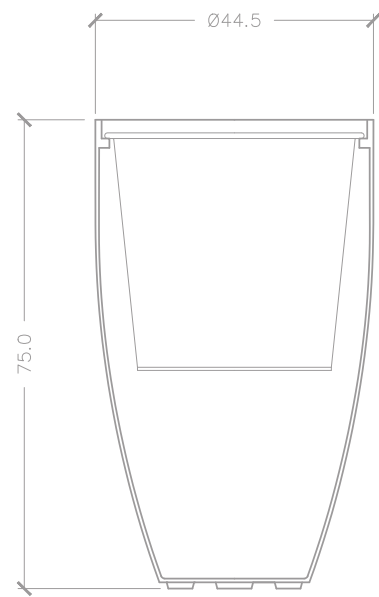




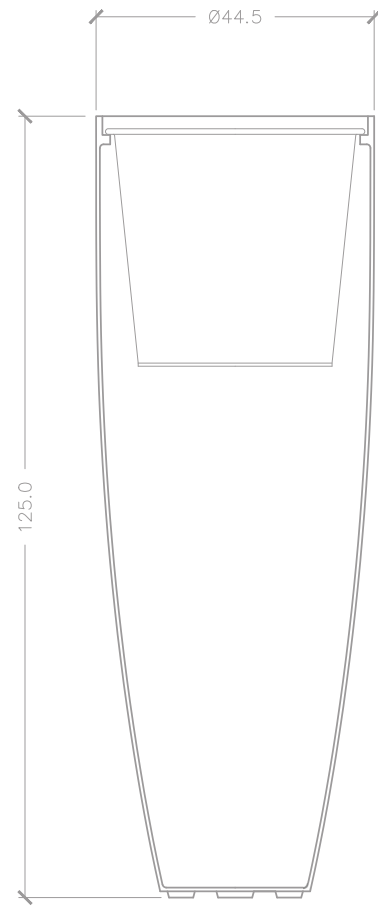
RECTANGLE 71x36.5x40



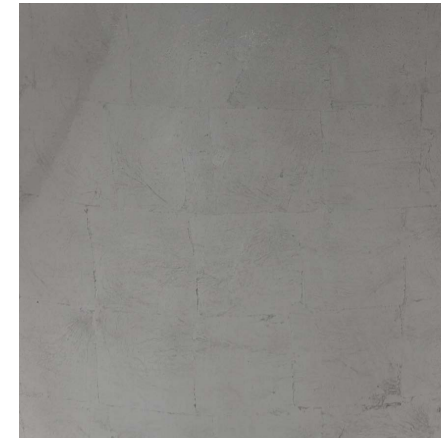
BALL 52x50



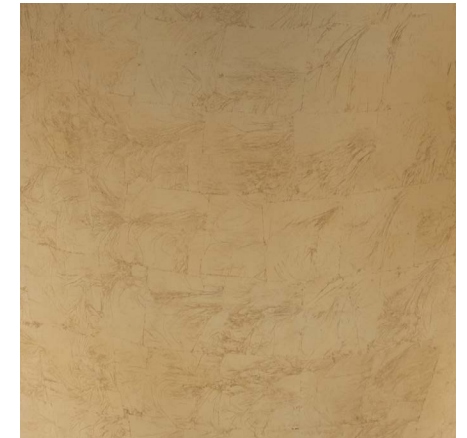
VASE 44.5x75



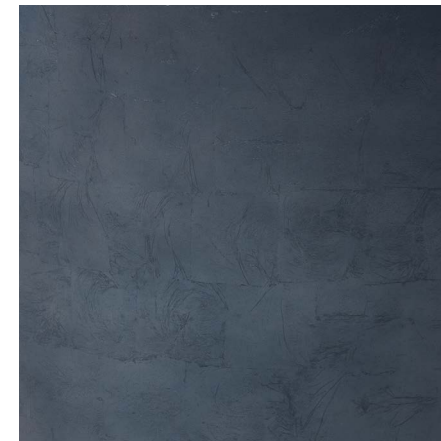
TALL VASE 44.5x125



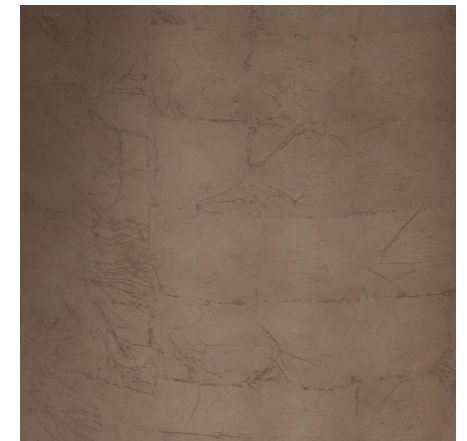
GRAY LEAF



GOLD LEAF



BLUE LEAF



TAUPE LEAF



BROWN EGGSHELL



WHITE EGGSHELL



grey leaf 50



GREY LEAF



grey leaf 50
ASL-525250-S2



Ø 52 CM
H 50 CM



grey leaf 75
ASL-444475-S2



Ø 44 CM
H 75 CM



grey leaf 125
ASL-4444125-S2



Ø 44 CM
H 125 CM





gold leaf 75



GOLD LEAF



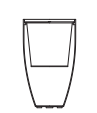
gold leaf 50
ASL-525250-G2



Ø 52 CM
H 50 CM



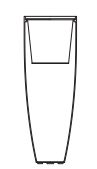
gold leaf 75
ASL-444475-G2



Ø 44 CM
H 75 CM



gold leaf 125
ASL-4444125-G2



Ø 44 CM
H 125 CM





BLUE LEAF



blue leaf 50
ASL-525250-B1



Ø 52 CM
H 50 CM



blue leaf 75
ASL-444475-B1



Ø 44 CM
H 75 CM



blue leaf 125
ASL-4444125-B1



Ø 44 CM
H 125 CM



blue leaf 75



taupe leaf 125



TAUPE LEAF



taupe leaf 50
ASL-525250-T1



Ø 52 CM
H 50 CM



taupe leaf 75
ASL-444475-T1



Ø 44 CM
H 75 CM



taupe leaf 125
ASL-4444125-T1



Ø 44 CM
H 125 CM





BROWN EGGSHELL



brown eggshell 50
AES-525250-BLD



Ø 52 CM
H 50 CM



brown eggshell 75
AES-444475-BLD



Ø 44 CM
H 75 CM



brown eggshell 125
AES-4444125-BLD



Ø 44 CM
H 125 CM





WHITE EGGHELL



white eggshell 75
white eggshell 125



white eggshell 50
AES-525250-W1



Ø 52 CM
H 50 CM



white eggshell 75
AES-444475-W1



Ø 44 CM
H 75 CM



white eggshell 125
AES-4444125-W1

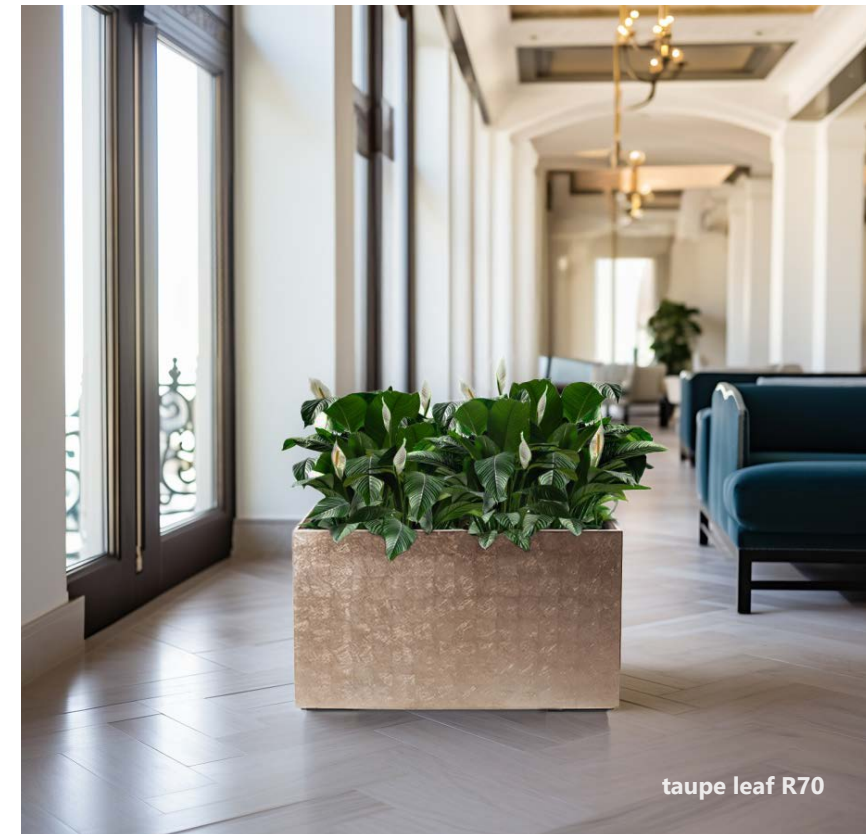


Ø 44 CM
H 125 CM

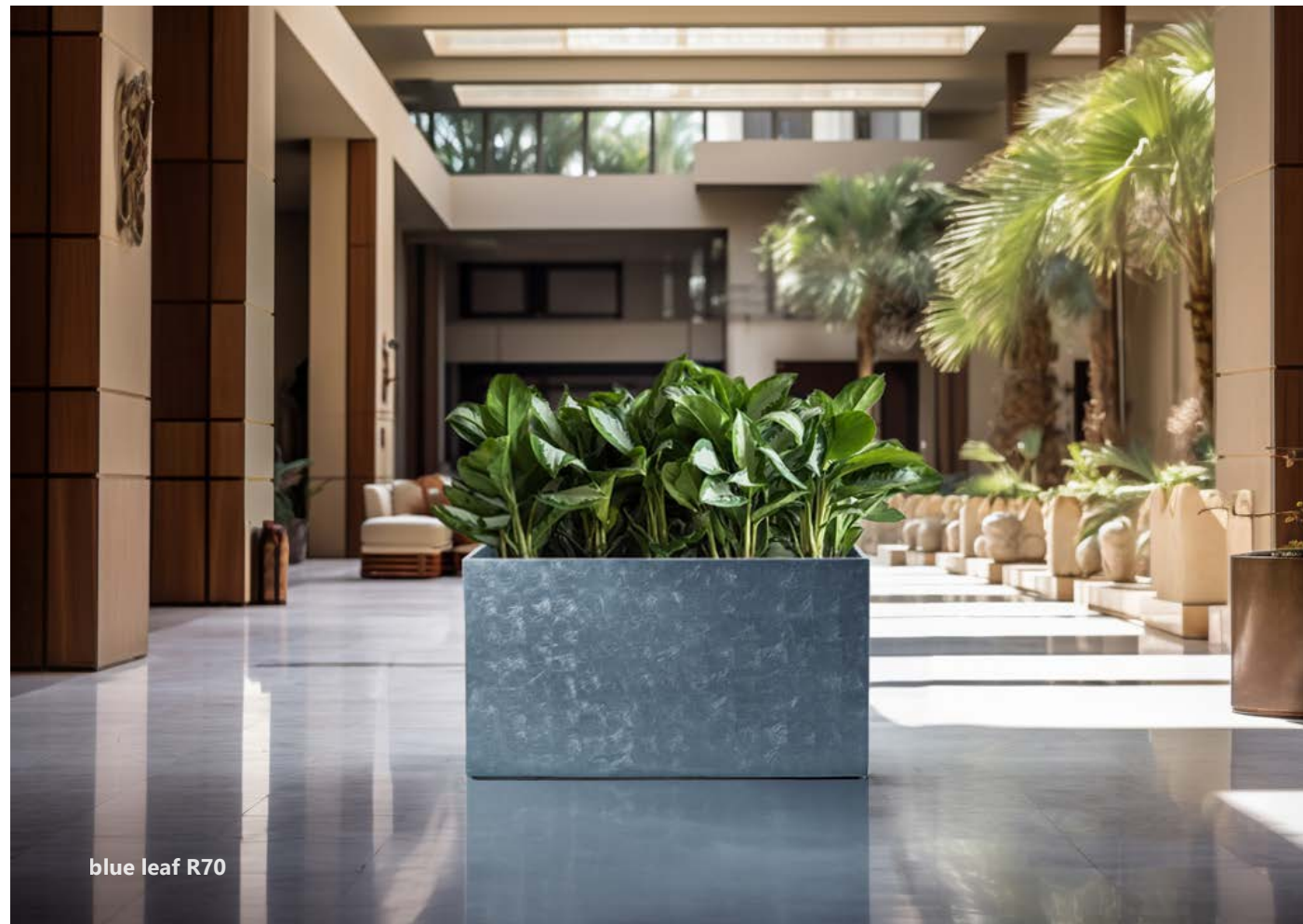




gold leaf R70



taupe leaf R70



blue leaf R70



grey leaf R70
ASL-713640-S2



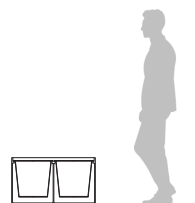
gold leaf R70
ASL-713640-G2



blue leaf R70
ASL-713640-B1



taupe leaf R70
ASL-713640-T1

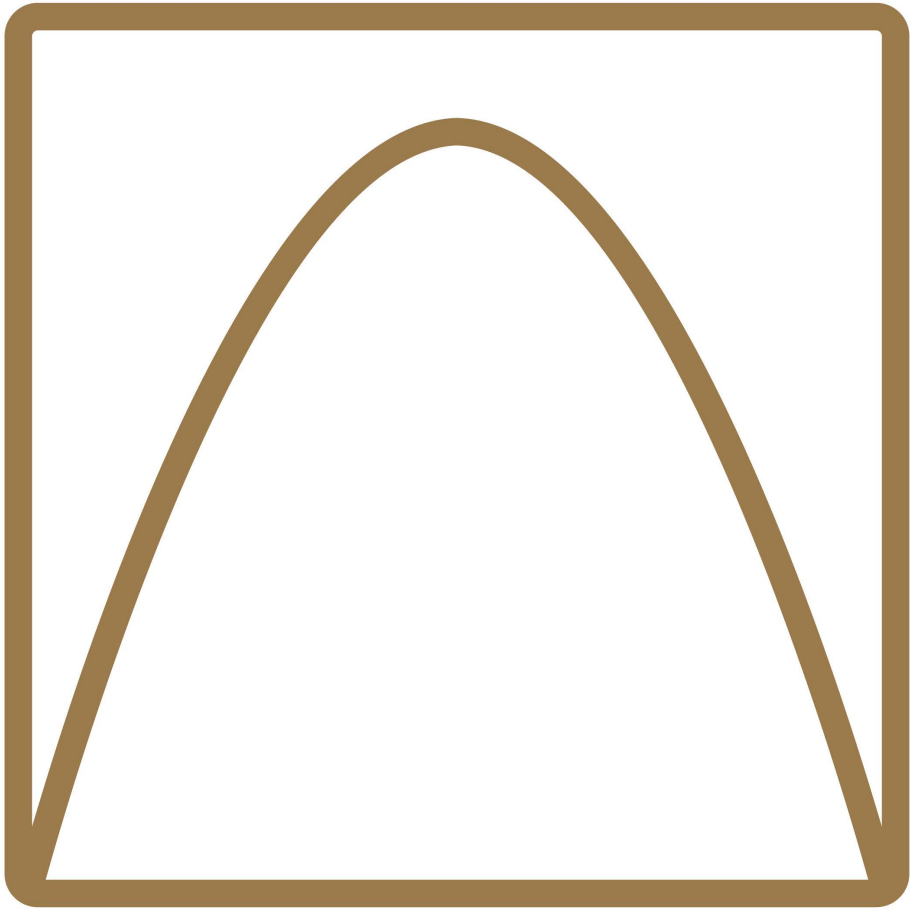


71 X 36 CM
H 40 CM



MIDDLE EAST DISTRIBUTOR

Aqualeena Trading W.L.L
Doha, Qatar
info@aqualeena.com
Tel: +974 66 00 99 23



artilay